

Barking and Dagenham SEND Local Offer (Autumn Term 2025/2026)

**Barking &
Dagenham**

SEND Team, Statutory SEND Service



**Together we make
this place home**



Barking and Dagenham SEND Local Offer is for You

The Local Offer has two key purposes:

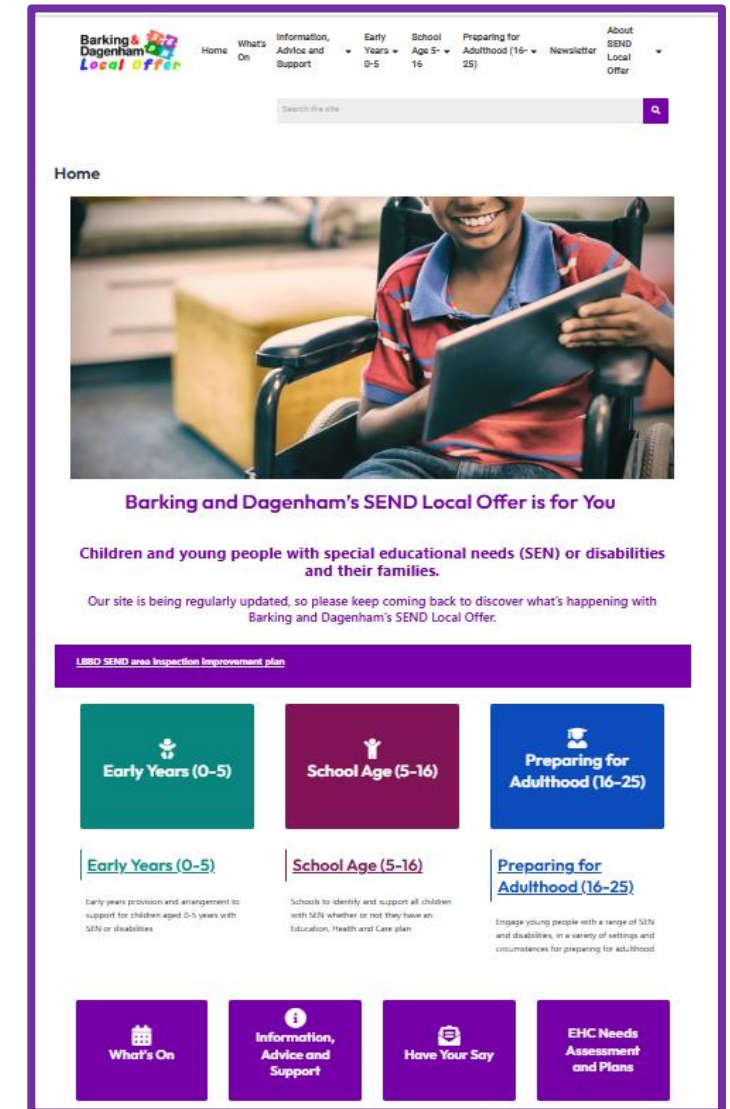
- ✓ To provide clear, comprehensive, accessible and up-to-date information about the available provision and how to access it
- ✓ To make provision more responsive by directly involving children and young people with SEND and their families, and service providers




Together we make this place home

SEND Local Offer is for CYP with SEND and their families, and for YOU as professionals working with CYP with SEND.

**Barking &
Dagenham**




Professional Zone



[Home](#)[What's On](#)[Information, Advice and Support](#)[Early Years 0-5](#)[School Age 5-16](#)[Preparing for Adulthood \(16-25\)](#)[Newsletter](#)[About SEND Local Offer](#)

Search the site

[Home](#) > [Information, Advice and Support](#) > Professional Zone



Professional Zone

[ProZone](#) is designed primarily for new SENCo and professionals to know Barking and Dagenham council services prior to exploring our corporate websites.

LBBB Early Years and Childcare

[LBBB Early Years and Childcare](#)

- [Early Years Inclusion Team](#)
- [Family Information Service](#)
- [Find a Nursery or Childcare](#)
- [Funded Early Learning](#)
- [Early Years Deaf Service](#)
- [Speech, language and Communication Support](#)
- [Early Years Foundation Stage \(EYFS\)](#)
- [Family Hubs and Early Help](#)
- [Community Hubs](#)
- [Help with living costs](#) – help with money, energy, food, wellbeing, getting connected, getting into work
- [0-19 Children and Family Health Services Healthy Child Programme](#) – Health Visiting (0-5)

LBBB Schools and Learning

[LBBB Schools and Learning](#)

- [School Admissions](#)
- [Schools in the Borough](#) – including information about [Music Education Hub](#)
- [Education Settings](#)– ARP and special schools
- [Adult College of Barking and Dagenham](#)
- [Barking and Dagenham College](#)
- [Free School Meals \(Pupil Premium\)](#)
- [Funding for SEN Support in Schools](#)
- [Home Education](#) and [Elective Home Education Policy](#)
- [Education Inclusion Team](#)
- [Education Inclusion Partners \(Exclusions and Suspensions\)](#) – [North, East, West](#)
- [Alternative Provision](#)(Primary and Secondary Guide)
- [Inclusion and School Attendance Service](#)
- [Vulnerable Pupil Hot Clinics \(VPHC\)](#)
- [Education Placement Panel \(EPP\)](#)
- [Education Psychology Service](#)
- [Aspire Virtual School](#)
- [BDSIP](#) – SEND & Inclusion Service
- [SENARP Home Support \(PHS Phoenix\)](#)
- [SEND Travel Assistance](#)
- [Travel Assistance Application](#)
- [Home to School Travel Assistance Policy](#)
- [Education Health and Care \(EHC\) Team](#)
- [EHC Request for Assessment Form \(Professionals\)](#) (DOCX, 541 KB)
- [EHC Allocations](#) – [from June 2025](#) (XLSX, 57 KB)

LBBB Children, Young People and Families

[LBBB Disability and Special Needs Services](#)

- [Report a serious concern about a child](#) (MARF/MASH)
- [Targeted Early Help and Children's Social Care referral form](#)
- [Children with Disability Team](#)
- [Dynamic Support Register](#) ^{NEW}

LBBB Adult Health and Social Care

[LBBB Adult Health and Social Care](#)

- [Care Needs Assessment in Adult Social Care](#) (leaflet)
- [Assessment Process](#)
- [Care technology](#)
- [Adult College of Barking and Dagenham](#)
- [Assistance with shopping and help preparing meals](#)
- [Help to live at home](#)



Together we make this place home

ProZone is designed primarily for new SENCo and professionals to know Barking and Dagenham council services prior to exploring our corporate websites.

Barking & Dagenham



Early Years Inclusion Team

The Early Years Inclusion Team provides support and advice for early years practitioners, children with SEND and their families within their educational setting (nursery or pre-school).

Early Years SEND Team

Advisory Teacher for Early Years and Inclusion

Manage the Early Years SEND Team and support SENCOs and practitioners with practical advice and provide a range of evidence-based training.

SEND Business Support Officer

The primary point of contact for early years SEND enquiries and manage all administrative processes within the Early Years provision, including the Early Years SEND Toy Library and Tapping Toes Tuesday Early Years Dance Group.

Contact Deana Hyde – Deana.Hyde@bbd.gov.uk

SEND Advisor

Support Early years practitioners to identify children that will benefit from a full Education, Health and Care (EHC) assessment of need; support and guide parents/carers through this process.

SEND Support Worker

Provide targeted support for children undergoing the Education, Health and Care (EHC) assessment process, including delivering structured interventions, coaching, and modelling joint attention activities to early years practitioners to promote engagement and developmental progress.

Complex Social and Communication Worker

Support early years practitioners in nursery settings to introduce and implement foundational, evidence-based interventions, primarily focus on the use of transitional objects and attention-building activities to enhance children's engagement.

Support Worker for Parents with Children with SEND

Provide practical support to parents within the home environment and delivers a range of training courses, covering topics such as navigating the admissions process and supporting children through to transitions into school, for children under 5 years.

Teacher of the Deaf

Offer support and advice to parent/carers and practitioner that have children who are deaf in early years settings.



Together we make this place home

Early Years 0-5

[Home](#) > Early Years 0-5

Early Years 0-5



Early Years 0-5



Care and Family Support

Care and family support for under 5s with special educational needs or who are disabled

Help for Families

Information, advice, guidance and activities to support you on your family journey:

- Pregnancy and Birth
- Birth and Pre-School, 0-5 years
- Primary and Secondary School, 5-14 years

[Help for Families – Our Hubs website](#)

Family Hubs

Family Hubs are for families with children aged from 0 to 19, up to 25 years with special educational needs and disabilities who need a bit of extra help.

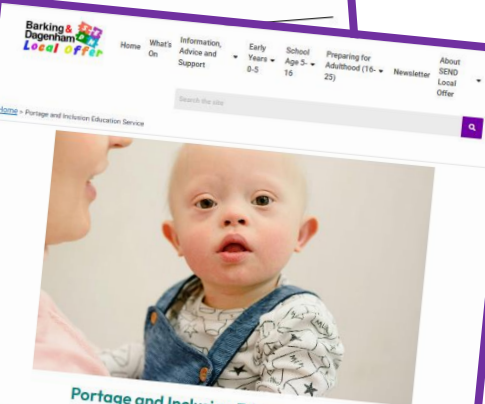
Come in and find a friendly face, a listening ear and a wide range of information, advice and guidance.

Early Language and Communication

Across our borough, we're placing a strong focus on supporting children to know that the early years are a critical time for language development.

To help parents and carers stay informed and empowered, please see:

- Speech, language and communication tips
- Local events and activities
- Guidance and resources for families
- Updates from professionals working in early years



Portage and Inclusion Education Service

The Portage team support children aged 0 - 4 years, living in Barking and Dagenham, who have significant and/or long lasting delays in their development. The team are based at Allon Children Centre. It is an early intervention service within the Children and Young People with Disability (CYPD) Service.

Portage provides support through targeted groups, Home Learning sessions and Transition to nursery. They can also help with applying for DLA, short breaks, making referrals to other agencies and talking with other professionals.

For Portage referral, please complete the [online referral form](#) on the One Borough Voice website.

For more information about the Portage Service, please download this document (PDF, 986 KB) or visit [Portage and Inclusion Education Service](#)

Contact the Portage Team on email PortageOffice@bbd.gov.uk or telephone [020 2724 6655](tel:02027246655)

Thank You to our early years providers for effectively using resources to support the progress of our children with SEN.

School Age 5-16

Home • School Age 5-16 • Education



Education 5-16

Barking and Dagenham Council and its educational partners are here to support and enable children and young people with SEND to enjoy the best possible quality of life and achieve excellent outcomes.

Local is Best and Inclusive Schools

We are passionate about our children and young people being educated as close to their home as possible and in schools and settings who fully embrace inclusion.


Schools	High Aspirations and Expectations for Children with SEN	Identifying SEN in Schools
SEN Support in Schools	Funding for SEN Support in Schools	Support for schools and settings
Travel Assistance	Education, Health and Care (EHC) Needs Assessments and Plans	Resolving Disagreements

Barking & Dagenham Local Offer

Home • About SEND Local Offer • Early Years 0-5 • School Age 5-16 • Young People 16+ • Information, Advice and Support • What's On • Have Your Say

Search the site

Home • School Age 5-16



School Age 5-16

Education	Care and Support	Health
-----------	------------------	--------

Barking & Dagenham Local Offer

Home • What's On • Information, Advice and Support • Early Years 0-5 • School Age 5-16 • Preparing for Adulthood (16-25) • Newsletter • About SEND Local Offer

Search the site

Home • School Age 5-16 • Care and Family Support



Care and Family Support 5-16

Every child and family needs support at different times. The agencies list support for families with children who need specific kinds of help. The additional organisations that offer support and guidance are:

Page Content

- 1. Local Family Support Service
- 2. Children's Clubs / Specialists on the line
- 3. Support if your child is disabled
- 4. Disability criteria for disabilities
- 5. Additional needs support
- 6. Organisations offering support
- 7. Benefits for additional needs

Home • School Age 5-16 • Health Services

Search the site

Health Services



A list of health services for children 5-16 years with SEND.

NHS

Barking & Dagenham

NHS Learning Disability and Autism

The programme is about making health and care services better so that more people with a learning disability, autism or both can live in the community, with the right support, and closer to home.

NHS Reasonable Adjustments

The Equality Act (2010) states all organisations including health and social care, such as hospitals and GP surgeries must take steps to remove the barriers individuals face because of disability.



Together we make this place home

Thank You to all our schools for your efforts in helping CYP reach their full potential and lead fulfilling lives.

Barking & Dagenham

SEND Support in Schools

Schools

- High Aspirations and Expectations for Children with SEN
- Identifying SEN in Schools
- SEN Support in Schools
- Funding for SEN Support in Schools
- Support for schools and settings
- Travel Assistance
- Education, Health and Care (EHC) Needs Assessments, Plans and Annual Reviews
- Resolving Disagreements



Together we make this place home

Together, we are making the best use of resources to support our CYP in achieving their best.

SEN Support in Schools

All schools have a duty to provide support to children and young people with SEN they have an EHC plan.

Page Content

1. What to expect from your child's school regarding special educational needs (SEN) support.
2. Assess, Plan, Do, Review
3. What to expect in the Graduated Approach?
4. Summary of Barking and Dagenham's Graduated Response

What to expect from your child's school regarding special educational needs (SEN) support.

Funding for SEN Support in Schools

All mainstream schools are provided with resources to support those with SEN and disabilities. Schools have an amount identified in their budget, called the national SEN budget.

Schools are not expected to meet the full costs of more expensive special educational provision from their core funding. The request for additional top up funding where the cost of the special educational provision required to meet the needs of an individual pupil exceeds the prescribed threshold.

Mainstream Setting	Special School/Resource Provision in Mainstream Setting	
Element 1 Universal	Basic entitlement - per pupil/learner of £4K within school delegated budget.	Place funding of £10K through the combined total of Elements 1 and 2
Element 2 Low cost, high incidence	Additional funding through the schools delegated national SEN budget - schools are expected to provide support up to the equivalent of £6K per pupil/learner.	

Support for schools and settings

All schools have a duty to provide support to children and young people with SEN they have an EHC plan.

Page Content

1. Local Authority Education Inclusion Team
2. Local Authority SEND Services - Education Health and Care (EHC) Team
3. Educational Psychologists
4. Aspire Virtual School
5. SDIP
6. Partnerships, Commissioning and Training
7. SENARF Home Support (SHS)
8. Developing the expertise of the workforce
9. Partnership work with Health

Local Authority Education Inclusion Team

This team aim to support schools, young people, and families in Barking and Dagenham by focusing on ways to engage young people in their learning. The team do this through early intervention and looking at key strategies such as the prevention of and reducing suspensions, exclusions and keeping pupils in school to achieve good attendance.



Preparing for Adulthood (16-25)

Empowering and Inspiring the Future

Preparing for Adulthood: best outcomes in adult life

What is preparing
for adulthood?

Post-16 Education

Preparing For and
Finding
Employment

Independent Living

Participating in
Community

Transition to Adult
Health and Social
Care Services

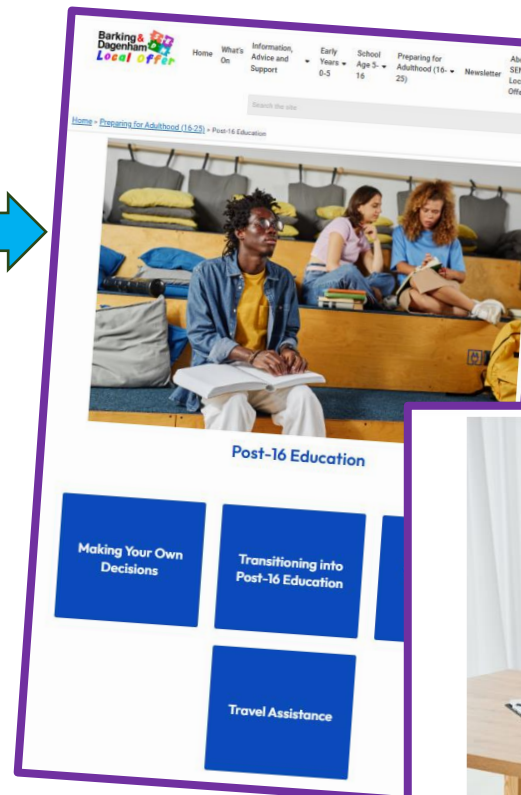
Staying Healthy

EHC Needs
Assessment and
Plan

National
Development Team
for Inclusion (NDTI)
All Tools &
Resources



Together we make this place home



Independent Living

Finding somewhere to live

Living Independently at Home



Staying Healthy

Moving from children's social care to adult's social care

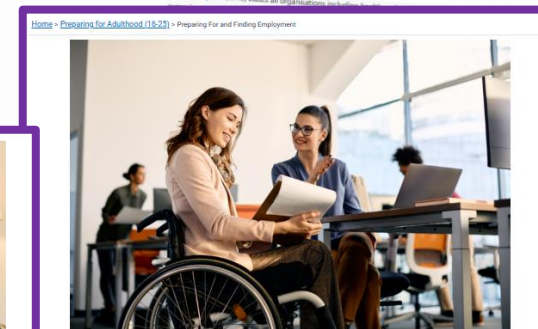


NHS Learning Disability and Autism

The programme is about making health and care services better so that more people with a learning disability, autism or both can live in the community, with the right support, and close to home.

NHS Reasonable Adjustments

The Equality Act (2010) states all organisations should make 'reasonable adjustments' to help people with disabilities.



Preparing For and Finding Employment

If I have SEND, is it realistic to think about paid work?

Absolutely. With the right opportunities, preparation and support, nearly all young people with SEND can move into employment. Paid work is good for us. It can give us financial independence, friends, and it's good for our physical and mental health.

Pathways to
Employment

B&D Opportunities
and Supported
Employment

Specialist Team
Support

Career
Opportunities
Information and
Advice

Apprenticeships
and Supported
Internships

Explore Careers
Videos

From SEND Local Offer Health to NHS NELFT Barking and Dagenham Health Services

Barking and Dagenham Local Offer

Home What's On Information, Advice and Support Early Years School Preparing for Adulthood About SEND Local Offer

Search the site

Health

0-5 Health Services 5-16 Health Services 16+ Health Services

NHS North East London NHS Foundation Trust

I need urgent help

Home About us Our services Patients, carers and visitors News Contact us Jobs at NELFT

Home 5-19 years

Back Barking and Dagenham services for 5-19 years Showing "A" to "N"

Adult Musculoskeletal Services (MSK)	Audiology Service	Barking & Dagenham CAMHS	Barking & Dagenham Mental Health & Wellness Teams (MH&WTs)	Barking & Dagenham Mental Health Support Team (MHST)
Barking & Dagenham Tissue viability	Barking and Dagenham Children and Families Health Service	Barking and Dagenham Nutrition and dietetics service	Barking, Havering & Redbridge Blood Test Service	Beam Park Health Centre
BHR Children's Autism Service	Children in Care Service Barking and Dagenham	Children's Integrated Therapies - Barking and Dagenham	Community health and social care services (Barking)	Community medical paediatrics
Community paediatric continence service	Community treatment team	Dialectical Behaviour Therapy for Adolescents (DBT-A) service	District nursing	Early intervention in psychosis service
Eating Disorders Service - London areas	Environmental controls service	Health visiting (0-5)	IMPART personality disorder service	INTERACT (adolescent outreach team)

Barking and Dagenham Children and Families Health Service

Home Our services Main locations London Services Barking and Dagenham Barking and Dagenham Children and Families Health Service

Health visiting (0-5) School nursing (5-19) Useful resources and information for parents For clinicians Contact us

Follow us on Facebook Barking and Dagenham 0-19 Facebook page

Barking and Dagenham Children and Families Health Service

The Barking and Dagenham Children and Families Health service delivers the Healthy Child Programme (HCP) in partnership with **Barnardo's**. The HCP is a health care programme that is offered to families/ carers with children from antenatal to 19 years of age.

Contact us

Child and Family Centre
77 Axe Street
Barking
Essex
IG11 7LZ
Tel: 0300 300 1813
Opening times: Monday to Friday 09.00 – 17.00

Harper - Our virtual assistant

Let our new virtual assistant Harper help you manage your child's 10-12 month or 2-2 1/2 year health review appointments. Click the pink 'Chat now' button in the bottom right to get started.

Service information

Referral exclusions
Children aged less than 2.5 years and young adults aged 19+

Age group
2.5 years - 19 years

Opening hours
Monday - Friday 9am - 5pm

Locations
Barking & Dagenham: Child and Family Health Centre, 79 Ave Street, Barking, IG11 7LZ
Havering: Child Development Centre & CAMHS, Grove Road, Rainford, RM4 4XH
Havering: Aspin Centre, 308 London Road, Rainford, RM4 4XH

Assessments completed
Number of assessments completed by Barking and Dagenham, Havering, and Redbridge Autism Service
July 2025: 200

Referrals accepted
Number of referrals accepted by Barking and Dagenham, Havering, and Redbridge Autism Service
July 2025: 291

Service information

Children's Integrated Therapies - Barking and Dagenham

Language Pathway
The Children's Integrated Therapies (CIT) service is part of Barking and Dagenham Targeted Services. The CIT offers both integrated and single therapies depending upon need and will provide specialist assessment, treatment and management for those children that need the criteria for the service. The CIT service will offer 'universal services' in the form of training to parents, nurseries and schools, 'targeted services' offering early intervention and advice of therapeutic intervention and 'specialist services' (speech and language therapy) for children with specific needs.

Deliveries of Universal, Targeted and Specialist Services about Next 7/2025

The team works with children and young people (CYP) aged 0-19 in schools, children's centres, clinics and specialist services to provide assessment, treatment and management for those children that need the criteria for the service. The CIT team works with colleagues in education and social care to deliver an integrated service for children and young people and all place information only to support the care outcomes for the child or young person.

LB&D also offer a pre-referral advice service for under 5 year olds and Play and Communication groups in the Barking and Dagenham area.

Referrals for more information

Each of these Pathways has clear entry criteria and set packages of care based on need. Click on each Pathway to see more information.

Referrals for speech sound assessment to be used with specialist speech and language therapy or speech sound assessment (such as Speechlink)

Harper - Our virtual assistant

Let our new virtual assistant Harper help you manage your child's 10-12 month or 2-2 1/2 year health review appointments. Click the pink 'Chat now' button in the bottom right to get started.

If you have received communication from us with a QR code and URL, link you can now view, cancel or reschedule your child's appointment through Harper.

Find out more about Harper



Together we make this place home

Barking & Dagenham SEND Local Offer Newsletter

November 2025



Here is Our Home

Warm Spaces and Community Partners



Covid-19 has demonstrated the strength of partnership and with our community partners. We are committed to everyone in the borough to care for ourselves and our

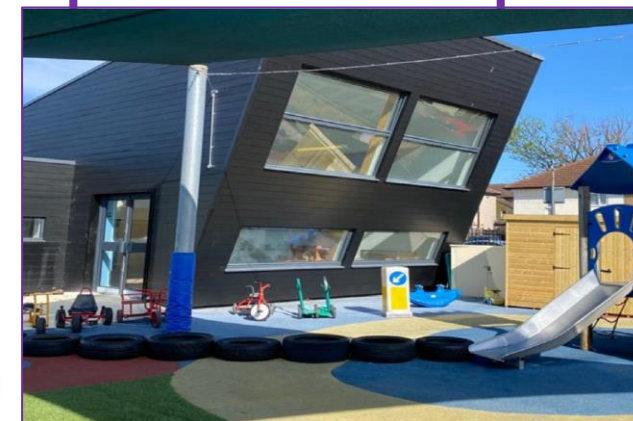
Children and Young People Disability Hub (CYPD Hub) and Family Hubs



The [CYPD Hub](#) is for families who live in Barking and Dagenham, who has a SEND child under the age of 18 years old.

The CYPD Hub runs a range of different activities during term time and school holidays such as:

- [Coffee Morning](#) – monthly information sessions that covers common challenges children with disabilities and families experience



Barking & Dagenham
Family Hubs

Activities for CYP and What's On Calendar

Barking and Dagenham Family Information - Online

Use this directory to search for:

- Listed registered childcare settings
- Information on help with childcare costs
- Local schools, groups, activities and things to do (0-25s and all the family!)
- Local and national services providing information, advice and support to families, children and young people

A-Z Search

To begin your search, please select a category or search for a provider beginning with a letter of the alphabet.

A B C D E F G H I J K L M N O P Q R S T U V W X Y Z 0-25s

Childcare search

This section lists Early Years and Childcare provisions in the Borough. This includes day nurseries, pre-schools, school nurseries, out of school clubs, including holiday clubs and more.

Childcare with school drop off/pick up

Apply for free childcare for 2 year olds

Click here to apply for free childcare for 2 year olds - for families receiving some additional forms of government support.

Full criteria can be found

For further help with childcare costs please visit: [www.barkinganddagenham.gov.uk](#)

Schools and Learning

Information on local schools and colleges along with other support available to families.

Also see: [16-19 Subsidies and Learning for School Leavers](#) and more.

Health and Wellbeing

Information on health, clinics and health and wellbeing support for young people's health and wellbeing.

Keeping Safe

Everyone in our community can help to keep it safe.

Children Clubs (Specialist or Inclusive)

AbPhab Youth Club

Ages: 11-18 and 19-25
Address: The Vibe Youth Centre, Dagenham, RM8 2UT
Contact: 07360 493102 or email info@abphabyouthclub.org.uk
[AbPhab Youth Club](#)
Facebook: [Ab Phab Youth Club](#)

Future - Futureability Club

Ages: 8-12, 13-19, up to 25 with additional needs
Address: 201-225 Porters Avenue, Dagenham, Essex RM9 5YX
Contact: 020 3941 6722 / enquiries@futureyouthzone.org
[Future - Futureability Club](#)
Facebook: [Future_Barking and Dagenham Youth Zone](#)

Peer Support Group (PSG) Youth Club

Ages: 11-19 (up to 25 for people with SEN)
Contact: Grace Kithu - 07875993500, grace.kithu@lbbd.gov.uk
Heather McElvey - 07968511930, heather.mcelvey@lbbd.gov.uk
[Peer Support Group \(PSG\) Youth Club](#)

Purple Penguin Club

Ages: 5-18
Address: The Vibe, 195-211 Becontree Avenue, Dagenham, RM8 2UT
Contact: 07881 948799 / fun@purplepenguinclub.org.uk
[Purple Penguin Club](#)
Facebook: [The Purple Penguin Club](#)

Youth Service

Local activities, advice and information for young people.

CYPD Hub

INSPIRE YOUTH TO ACHIEVE

Co-Designing B&D's Youth Offer

We are now in the next phase of developing our Youth Offer, working closely with young people across the borough.

In collaboration with voluntary and community sector (VCS) and local authority (LA) partners, we are gathering the needs and aspirations of our young residents.

Your input is invaluable in highlighting the array of opportunities available, fostering collaboration and ensuring the Youth Offer meets the needs of our young people.

To find out more about how you can get involved as an organisation, school, or young person, please email hiwot.ameneshoa@lbbd.gov.uk.

Barking and Dagenham Youth Forum

Information about our youth forum

Meet Barking and Dagenham's Young Mayor

Information about the Young Mayor

Future Youth Zone

Youth education advice

Youth activities at local leisure centres

Find out more about the activities at Abbey Leisure Centre and Becontree Heath Leisure Centre.

Abbey Leisure Centre

Bobby Moore Way, Barking, IG11 7HW.
Telephone 020 3948 4960
Email abbeyactivities@everyoneactive.com

Find out more information about Abbey Leisure Centre on their [website](#) and [Facebook page](#).

Offer	Target YP or Open Access?	Day and time	Contact person/people
Swimming Lessons	Swimming lessons for children aged 4 months to 15 years	Various	Aimee Lawless

Home What's On Information, Advice and Support Early Years 0-5 School Age 5-16 Preparing for Adulthood (16-25) Newsletter About SEND Local Offer

Search the site

[Home](#) > What's On - Our Hubs

#Special-Needs 12/11/25 Pinboard Agenda Monthly

Today's schedule

Phoebe's Green Christmas

Wed 12th Nov 11:00am - 1:00pm

Phoebe's Green Christmas: A Free Digital Sensory Show

Our fun & friendly puppets come together again for another interactive, sensory, Christmas adventure! Christmas for Kids by Embracing Arts

[Special-Needs](#) [Disabilities](#) [Children-and-Family](#) [Christmas](#)

Wed 12th Nov 12:30pm - 4:30pm

Sensory Room at Village Community Hub "Booking only"

A Sensory Room for children aged 0-5 years is a vibrant, engaging space designed to stimulate young minds and support their developmental ...

Village Community Hub

[Children-and-Family](#) [Local-Offer](#) [Disabilities](#) [Special-Needs](#)

Wed 12th Nov 6:30pm - 8:30pm

Evolve Session: Inclusive Youth Club for SEN aged 18-25

Evolve Sessions Ages 18 - 25 Our Evolve group are four months into a multi-year life skills and employability project. This project will ...

The Vibe Youth Centre

[Special-Needs](#) [Disabilities](#) [Children-and-Family](#)

Thu 13th Nov 1:00pm - 2:00pm

Portage Parent Support Sessions "Booking Only"

Portage Parent Support Sessions Supporting You, Supporting Your Child What to expect: Learn about services available in Barking & Dagenham ...

Thames Community Hub

[Local-Offer](#) [0-to-5-Years-Old](#) [Special-Needs](#) [Children-and-Family](#) [Disabilities](#) [Booking-Only](#)

PLAY AND COMMUNICATE

PLAYING WITH SPEECH & LANGUAGE TOOLS

FREE Premier League Kicks Sessions

PLAY AND COMMUNICATE

PLAYING WITH SPEECH & LANGUAGE TOOLS

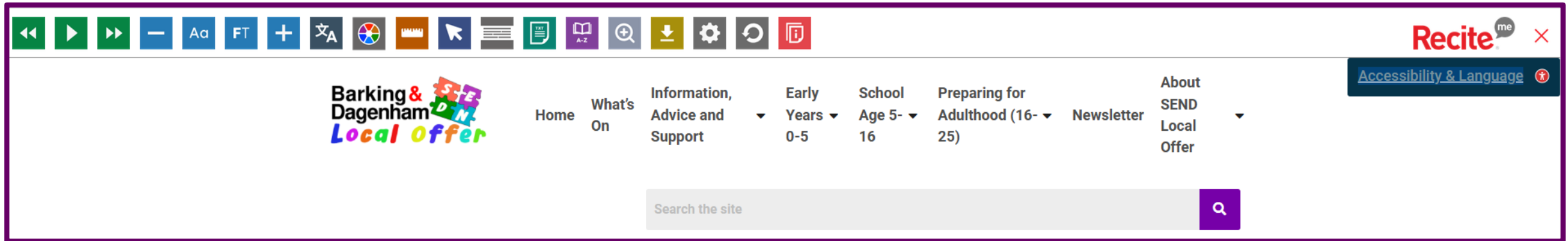


Together we make this place home

Christmas Holiday Activity and Food (HAF) programme is ready!

Barking & Dagenham

Improve the Accessibility and Navigation



Barking and Dagenham's SEND Local Offer is for You

Children and young people with special educational needs (SEN) or disabilities and their families.



Together we make this place home

Website Accessibility Assistive Toolbar - an enhanced Translation function and a Content Read-Aloud tool (over 100 languages and 65 text-to-speech voices) ensuring everyone can easily access information.

**Barking &
Dagenham**

Please scan Me



Together we make this place home

[Home](#)[What's
On](#)[Information,
Advice and
Support](#)[Early
Years
0-5](#)[School
Age 5-
16](#)[Preparing for
Adulthood \(16-
25\)](#)[Newsletter](#)[About
SEND
Local
Offer](#)

Home



Barking & Dagenham